

# 1

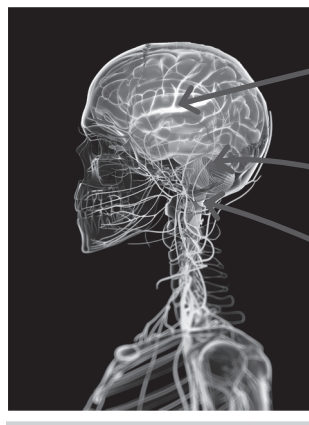
## WHY DO BABIES HAVE MORE BONES THAN ADULTS?

Name: .....

Class: .....

### 1 Circle the correct words. Then label the diagram.

- a) The *ribs / skull* protects the brain.
- b) The *cerebellum / cerebrum* controls our balance and coordination.
- c) The *brain stem / cerebellum* controls involuntary actions.
- d) The cerebrum controls *voluntary / involuntary* actions.
- e) The sense *organs / muscles* send information to the brain through the nerves.



f) \_\_\_\_\_

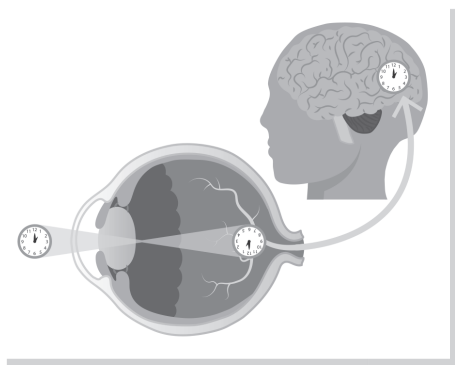
g) \_\_\_\_\_

h) \_\_\_\_\_

### 2 Match the sense to the correct sense organ.

- |            |                       |                       |        |
|------------|-----------------------|-----------------------|--------|
| a) Hearing | <input type="radio"/> | <input type="radio"/> | eyes   |
| b) Taste   | <input type="radio"/> | <input type="radio"/> | nose   |
| c) Sight   | <input type="radio"/> | <input type="radio"/> | skin   |
| d) Touch   | <input type="radio"/> | <input type="radio"/> | ears   |
| e) Smell   | <input type="radio"/> | <input type="radio"/> | tongue |

### 3 Order the sentences to explain how the eye works.



- a) The information is sent to the brain. \_\_\_\_\_
- b) Light reflects off an object and enters the eye. \_\_\_\_\_ 1 \_\_\_\_\_
- c) The brain reads the signal and tells us what we are seeing. \_\_\_\_\_
- d) The light forms an upside-down image on the retina. \_\_\_\_\_

# 1

## WHY DO BABIES HAVE MORE BONES THAN ADULTS?

Name: .....

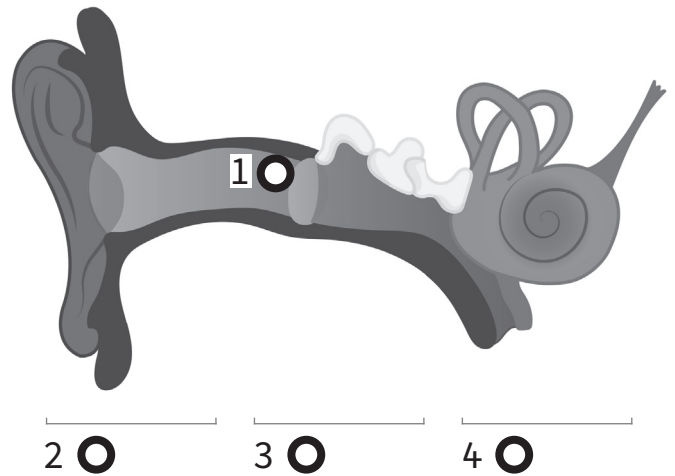
Class: .....

### 1 Read the descriptions and name the parts of the body.

- a) This organ controls everything we do. \_\_\_\_\_
- b) These organs send information to the brain. \_\_\_\_\_ organs
- c) These carry information to and from the brain. \_\_\_\_\_
- d) These form the skeleton and give the body shape. \_\_\_\_\_
- e) This is where bones connect to each other. \_\_\_\_\_
- f) These are soft and elastic. They help us move. \_\_\_\_\_
- g) These muscles work automatically. \_\_\_\_\_ muscles
- h) These muscles only work when the brain tells them. \_\_\_\_\_ muscles

### 2 Unscramble the words. Then match the words to the diagram.

- a) TOURE ear \_\_\_\_\_
- b) DDLEMI ear \_\_\_\_\_
- c) NNIER ear \_\_\_\_\_
- d) DMEARRU \_\_\_\_\_



### 3 Read the sentences and circle (T) true or (F) false. Copy the true sentences and correct the false ones.

- a) Our sense of hearing allows us to perceive colour, shape and size. T / F  
\_\_\_\_\_
- b) Our sense of taste and smell are connected. T / F  
\_\_\_\_\_
- c) Our sense of touch can tell us if something is sweet or sour. T / F  
\_\_\_\_\_
- d) Our sense of sight allows us to distinguish different sounds. T / F  
\_\_\_\_\_